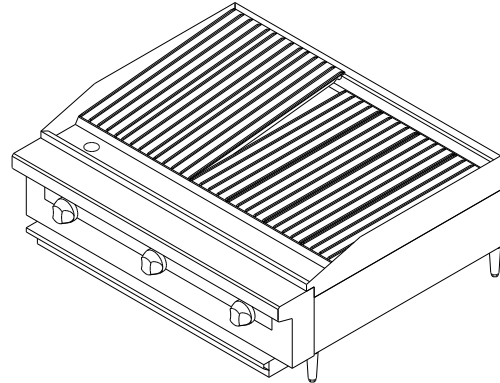


GENERAL SPECIFICATIONS

- *All gas counter series consist of a welded frame construction for strength and durability.
- *Models ranging from 24", 36", 48", 60", 72" are standard sizes.
- *All counter models are range match when placed on equipment stand (optional)

STANDARD FEATURES

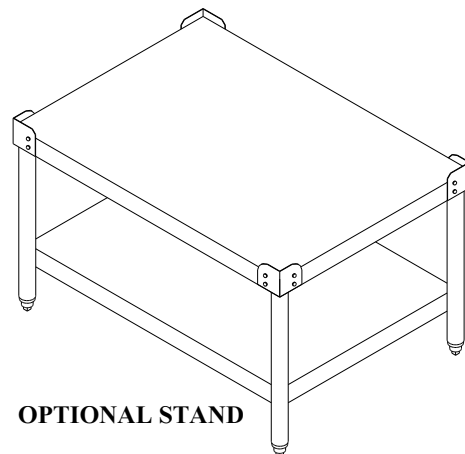
- *Fully stainless steel exterior.
- *4" Adjustable legs.
- *Gas pressure regulator
- *One year limited parts and labor warranty.
- *Easy to remove drip pans.
- *Spatula width grease trough.
- *Adjustable cast iron grates.
- *Heavy duty "U" burners @ 30,000 BTU's per section.
- *Each section is controlled by precision brass valve
- *Cast iron radiants equipped with multiple heat sinks designed to retain heat, protect the burner and pilot from blockage, and minimize flare-ups.



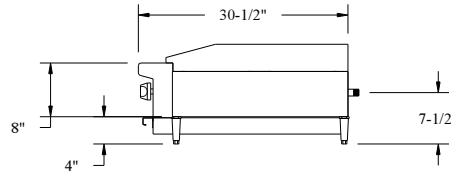
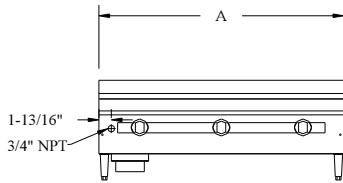
MODEL # TC36RB (shown)

OPTIONAL FEATURES

- Stainless steel equipment stand with bottom shelf,
- Sizes: 24", 36", 48", 60", and 72".



OPTIONAL STAND



GAS REQUIREMENTS

*Manifold pressure

*5.0" WC Natural Gas (NAT)

*10.0" WC Propane Gas (LP)

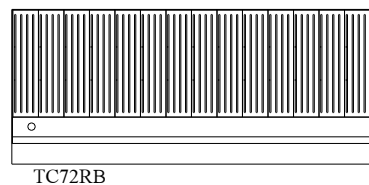
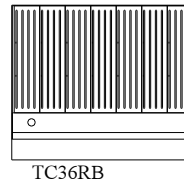
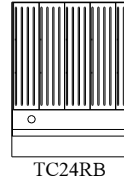
*When ordering please specify Natural or Propane Gas

*Manifold 3/4" NPT

*Input rating per burner

*"U" burner: 30,000 BTU/Hr

*TOTAL GAS CONSUMPTION PER MODEL	BURNERS	A
*TC24RB: 60,000 BTU/Hr	2	24"
*TC36RB: 90,000 BTU/Hr	3	36"
*TC48RB: 120,000 BTU/Hr	4	48"
*TC60RB: 150,000 BTU/Hr	5	60"
*TC72RB: 180,000 BTU/Hr	6	72"



CLEARANCES

Sides Back

*Non Combustible 0" 0"

*For use in non combustible locations only

WARRANTY

All THERMA-TEK Counter Series are covered by a one year limited parts and labor warranty. A detailed warranty is included with the appliance or is available upon request

